

# *Recipes* Database Manager

Document last updated on 29 March 2008  
(added MySQL export notes)

(c)Mark Dickinson 1999  
FREEMWARE

# *Table of Contents*

<b>RECIPES OVERVIEW.....</b>	<b>4</b>
<b>THE ALWAYS PRESENT DISCLAIMER.....</b>	<b>4</b>
<b>THE MAIN APPLICATION SCREEN.....</b>	<b>5</b>
THE TWO DISPLAY WINDOWS ON THE MAIN SCREEN.....	5
<i>The Folder Description Window.....</i>	6
<i>The Recipe Window.....</i>	6
MOUSE OPERATIONS FROM THE MAIN APPLICATION SCREEN.....	7
<i>Selecting a list of recipes from another folder.....</i>	7
<i>Viewing a recipe.....</i>	7
THE MENU OPTIONS AVAILABLE FROM THE MAIN APPLICATION SCREEN.....	8
<b>PRINTING.....</b>	<b>9</b>
PRINTING THE FOLDER LISTING.....	9
PRINTING A LIST OF RECIPES CONTAINED IN A FOLDER.....	9
PRINTING A RECIPE.....	9
<b>SEARCHING THE DATABASE.....</b>	<b>10</b>
SEARCHING.....	10
THE SEARCH RESULTS SCREEN.....	12
<b>FOLDERS.....</b>	<b>13</b>
OVERVIEW.....	13
ADDING A NEW FOLDER.....	13
DELETING AN EXISTING FOLDER.....	13
CHANGING THE DESCRIPTION OF A FOLDER.....	13
<b>RECIPES.....</b>	<b>14</b>
ADDING A NEW RECIPE.....	14
<i>The recipe and Ingredients sheet.....</i>	14
<i>The Preparation Required sheet.....</i>	16
<i>The Recipe Method sheet.....</i>	17
DELETING AN EXISTING RECIPE.....	18
EDITING A RECIPE.....	18
COPYING A RECIPE TO ANOTHER FOLDER.....	18
MOVING A RECIPE TO ANOTHER FOLDER.....	19
SHARING RECIPES WITH OTHERS.....	20
<i>Exporting Recipes.....</i>	20
<i>Importing Recipes.....</i>	22
<b>SHARING YOU RECIPES ON THE WEB.....</b>	<b>23</b>
EXPORTING AS HTML.....	23
EXPORTING AS MYSQL (ALPHA CODE).....	23
<b>CUSTOMISABLE CONTROL FILES.....</b>	<b>24</b>
THE DEVICES.TXT FILE.....	24
<b>THE ON-LINE HELP FACILITY.....</b>	<b>25</b>

THE RECIPES APPLICATION HELP.....	26
<i>The Initial Help Screen Displayed</i> .....	26
<i>Contents</i> .....	27
<i>Indexed Help</i> .....	28
THE GLOSSARY HELP.....	29
<b>THE DATABASE REPAIR/RECOVERY TOOLS.....</b>	<b>30</b>
THE INDEXREPAIRTOOL APPLICATION.....	30
<i>With an existing Index File</i> .....	31
<i>Without an Index File</i> .....	32
<b>PROCEDURES FOR REPORTING FAULTS.....</b>	<b>33</b>
<b>PROCEDURES FOR REQUESTING ENHANCEMENTS.....</b>	<b>34</b>
<b>REGISTERING.....</b>	<b>35</b>

## Recipes OverView

This application was created by me, as a bachelor, for my unique requirements. These are basically what do I have in the fridge and what can I do with it quickly.

As such it is primarily based around searching so *please* fill in all the optional fields when you add a new recipe. That is the things like the totally vegetarian flag if appropriate, the preparation time if any, and definitely the number of servings.

The search keyword functions are also designed for a bachelor, that is why enter cheese when chee will find it; so when doing searches you might want to type in the full word unless you want a lot of matches. Don't search on silly things like salt, search results are buffered in memory so unless you have 64MB+ installed try to limit your searches.

*Helpful hint:* I have started using 999 as a preparation time for anything that requires overnight preparation as its only a three byte field. This at least helps it stand out.

This application is released as freeware. As such suggestions may or not be acted on for product improvement. Support for problems is limited to you advising the author a problem has been found; the author does not commit to correcting problems found.

This application has been tested under Windows 98 and Windows XP Home Edition.

## The always present Disclaimer

### LIMITED WARRANTY AND DISCLAIMER

THE AUTHOR DISCLAIMS ANY WARRANTIES RELATING TO THIS SOFTWARE, WHETHER EXPRESS, IMPLIED, STATUTORY OR IN ANY COMMUNICATION WITH YOU, AND SPECIFICALLY DISCLAIMS ANY IMPLIED WARRANTY OF MERCHANTABILITY OR FITNESS FOR A PARTICULAR PURPOSE OR USE. THE AUTHOR DOES NOT WARRANT THAT THE OPERATION OF THIS SOFTWARE WILL BE UNINTERRUPTED OR ERROR-FREE.

### LIMITATION OF LIABILITY

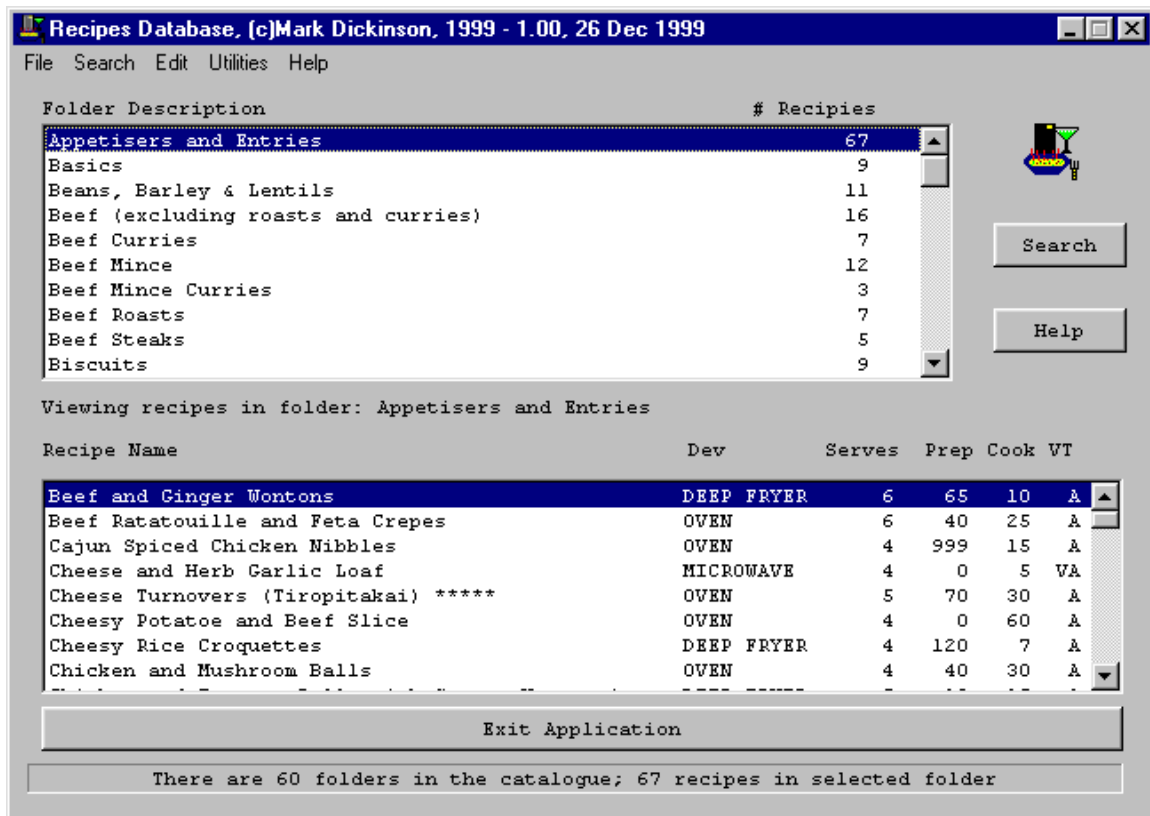
IN NO EVENT WILL THE AUTHOR BE LIABLE FOR ANY DAMAGES, INCLUDING LOSS OF DATA, LOST PROFITS, COST OF COVER OR OTHER SPECIAL, INCIDENTAL, CONSEQUENTIAL OR INDIRECT DAMAGES ARISING FROM THE USE OR ATTEMPTED USE OF THIS SOFTWARE OR ACCOMPANYING DOCUMENTATION, HOWEVER CAUSED AND ON ANY THEORY OF LIABILITY. THIS LIMITATION WILL APPLY EVEN IF THE AUTHOR HAS BEEN ADVISED OF THE POSSIBILITY OF SUCH DAMAGE. UNDER NO CIRCUMSTANCES SHALL THE LIABILITY OF THE AUTHOR EXCEED THE ACTUAL AMOUNT PAID TO AND RECEIVED BY THE AUTHOR IN CONNECTION WITH THE PARTICULAR COPY.

## The Main Application Screen

The application is designed to go through as few menus as possible to achieve any given function. As such the main screen will allow the majority of the application functions to be executed directly from it by using the menu bar functions.

Switching between folders or browsing a recipe is achieved simply by clicking on the folder you wish to see the contents of, or double clicking a recipe you wish to view.

An example of the main screen is below.



### ***The two display windows on the main screen.***

The top window of this screen displays a list of recipe folders. The bottom window is a list of the recipes available within the folders list entry that you have currently highlighted..

As you move between the folders the bottom window will update to show the recipes in each newly selected folder.

## **The Folder Description Window**

In the folder description window there are only two fields,

- the first is the folder description, which is the title you have given the folder
- the second field on the right hand side is the number of recipes contained within the folder.

## **The Recipe Window**

The fields in this window are as follows

- Recipe Name : The recipe name
- Dev : The cooking device. For customisation of these see the Customisable Files section where the cooking DEVICES.TXT file is described.
- Serves : The number of people the recipes is expected to serve
- Prep : The preparation time in minutes
- Cook : The cooking time in minutes
- V : If this field has a 'V' it is a vegetarian recipe. If it is blank it is non-vegetarian. Note that entries in this field are totally dependent upon you checking the vegetarian box when adding or updating a recipe.
- T : Identifies the recipe type. It will be blank for a main meal, A for appetiser, D for desert, S for a sauce, stock or paste, or O for other.

## ***Mouse operations from the Main Application Screen***

### **Selecting a list of recipes from another folder**

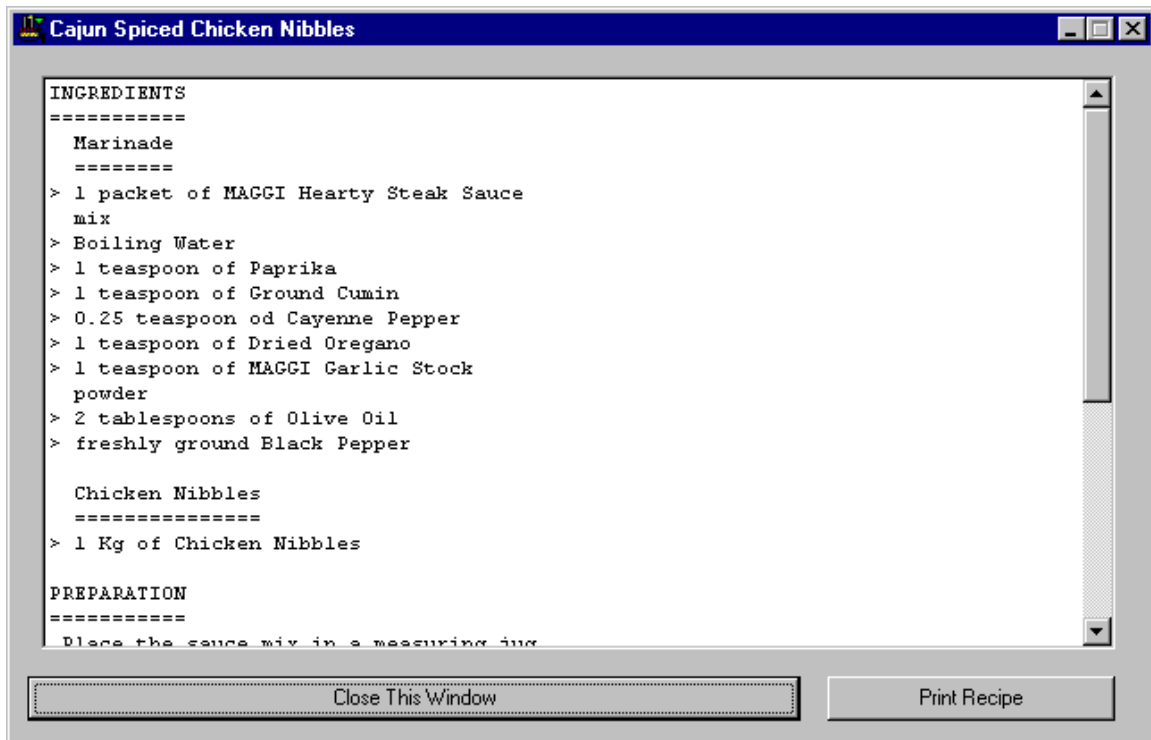
By single clicking the left mouse button on a folder title in the top list window the highlighted folder selection will change. When this is done the list of recipes in the bottom window will be updated to display the recipe titles for the recipes stored in the newly highlighted folder.

### **Viewing a recipe**

By double clicking the left mouse button on a recipe title in the lower window a browse window will be displayed containing the full details of the recipe selected. An example is shown below.

The recipe browse/print screen

This is displayed when a recipe in the bottom window of the main screen is double clicked with the left mouse button. The slide bar at the right of the screen may be used to scroll through the recipe.



- Clicking on the [Close This Window] button will return you to the main application screen
- Clicking on the [Print Recipe] button will display a standard windows printer selection dialog box to allow you to print the recipe.





## Printing

Any print request will present you with the standard windows printer dialog box. From here you may select the printer device to print whatever report you have requested to.

This application is fully compatible with windows add-on drivers that support Windows95 printer interfaces. It has been tested against the standard windows drivers and the third party SuperPrint drivers which work perfectly. If you have a third party driver that doesn't work with this application then I'd advise scrapping it and getting one that uses the documented interfaces.

### ***Printing the folder listing***

To print a listing of all folders managed by the application you need to, from the main screen, select the **[File]** option from the menu bar. From the options displayed select the **[Print Folder Listing]** option.

### ***Printing a list of recipes contained in a folder***

To print a listing of all recipes stored within a folders you will, from the main screen, select the **[File]** option from the menu bar. From the options displayed select the **[Print Recipe List]** option. This will print a list of all recipes stored in the currently highlighted folder.

### ***Printing a recipe***

To print a recipe the recipe must be displayed in a recipe browse window.

The recipe browse window is requested from the main application screen by double clicking on the recipe you wish to view from the bottom list box of the main application window.

The **[Print Recipe]** button from the browse window will allow you to print the entire recipe.

This is covered in a previous section, 'Viewing a Recipe'.

## Searching the database

### Searching

The database search facility will search every recipe in the database for recipes matching the criteria specified. The search screen is obtained by selecting the [Search][Search the Database] menu options from the main screen, or the [Search] button from the main screen. The following screen will be displayed.

Enter Database Search Parameters

Key Ingredients To Search For (comma seperated)

Search ingrediants on an AND basis (a and b required to satisfy search)

Search Ingredients on an OR basis (a or b found satisfy search)

Search for recipes that satisfy the meal type of :

Cooking device to be used :

Minimum Servings Required :  Maximum Servings Needed :

Minimum Cooking Time Expected :  Maximum Cooking Time Allowed :

Ignore preparation time for this search (don't treat as part of cooking time)

*Only display vegetarian recipes*

Begin Database Search Cancel Search

The keyword searches are applied to the recipe title and ingredients list of each recipe. Partial words may be used; for example 'CHE, GARL' will quite happily match on cheese or garlic.

The radio-buttons to search ingredients on an AND or OR basis are basically  
If **OR** is used, a recipe containing *any* keyword in the word list will satisfy the search and be displayed.  
If **AND** is used, only recipes that contain *every* keyword in the word list will be returned.

The meal type option may be used to limit the search to a specific recipe type, for example main meals only, or deserts only. Using **\*\* ALL \*\*** will find recipes for all categories.

The Cooking Device option may be used to narrow down the search. The default is to search for recipes on all devices, you may narrow the search by specifying that only recipes using a specific device are displayed in the search results; for example only MICROWAVE recipes. Using **\*\* ALL \*\*** will find recipes for all cooking devices.

Cooking Device options are set in the DEVICES.TXT file which is covered in the **Customisable Files** section.

The minimum and maximum servings fields may be used to narrow the search results into recipes that meet the needs of the number of people you wish to feed. The default is from 0 to 6.

The minimum and maximum cooking time fields are also used to narrow the search. The default is anything between 0 and 999. These fields may be used to search for quickies that take less than 15 minutes for example; or if you want to chat to your guests recipes that must take over 60 minutes to cook etc. The ignore preparation time must be taken into consideration here.

The ignore preparation time check-box will, if checked, not include the preparation time in the time checking when the recipe search is being conducted. *By default the preparation time in searches is included as part of the cook time.* You would check this box if you are planning future meals a day or two in advance, leave unchecked for meals you wish to cook tonight.

The 'only display vegetarian recipes ' checkbox is self explanatory. Obviously this will only work if you have taken the effort to check the vegetarian box when you added vegetarian recipes to the database.

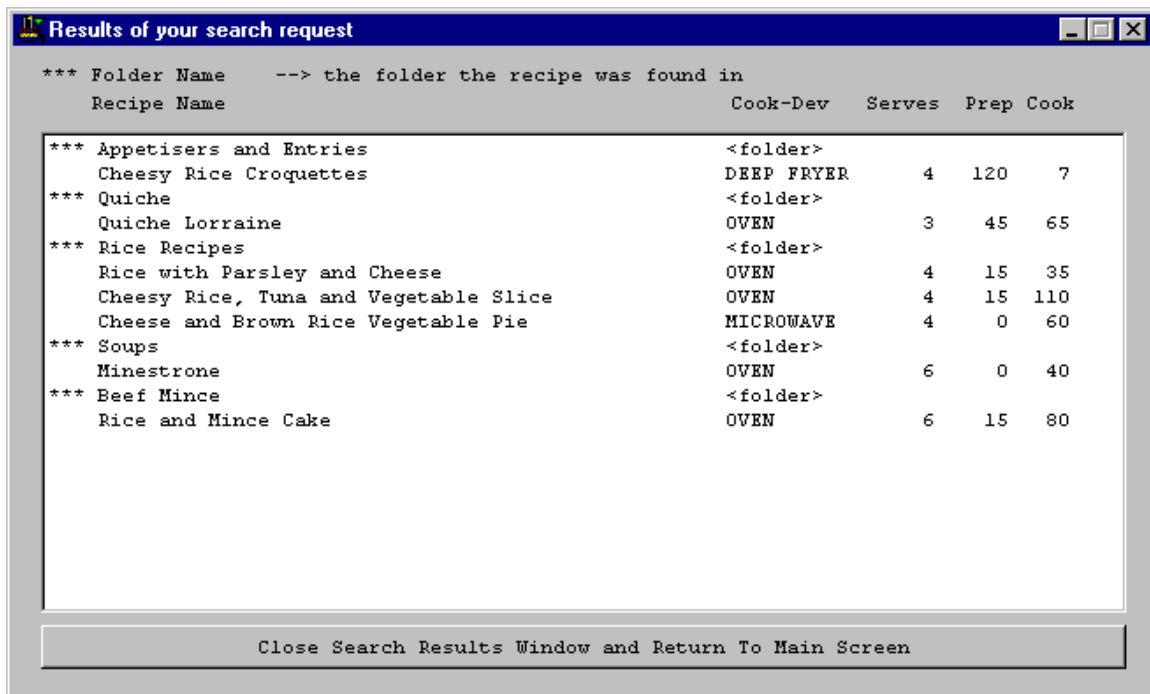
***You should try to narrow your search criteria as much as possible.*** All search results use dynamically allocated memory so the search result list is limited only by the available memory on your PC. But searches without keywords are not recommended.

Having said that, 100+ results can quite happily be displayed on a PC with 16MB of memory as long as no other applications are running.

## The Search Results Screen

As a result of a search request the following screen will be displayed. The entries beginning with \*\*\* are folder names and are not available to be browsed.

The recipes themselves may be double left mouse clicked upon to bring up the recipe browse screen covered earlier in the 'Viewing a Recipe' section.



On this screen all recipes matching the search results are displayed. As well as the recipe title the folder the recipe was found in is displayed.

*Note: The search results are not in alphabetic order, but in the order the physical folders and recipes were found.*

From this screen you may double left mouse click on any recipe to bring up the recipe browse screen. From here you may view or print the recipe. The functions available from the recipe browse screen were covered in the earlier section 'Viewing a Recipe'.

If you double click on a folder title you will be politely reminded that you cannot do that. Only Recipes may be directly accessed from a search results screen.

The list entries beginning with \*\*\* and having a cooking device description of <folder> identify the folder the recipe was found in. These are to aid in locating the recipe from the main window if required later and cannot be clicked into.

The Cooking Device, Serves, Preparation and cook times are documented in 'The Recipe Window' section covered earlier; and are self explanatory anyway. The only difference being that a Cooking Device of <folder> is a descriptive entry that cannot be clicked into.

## Folders

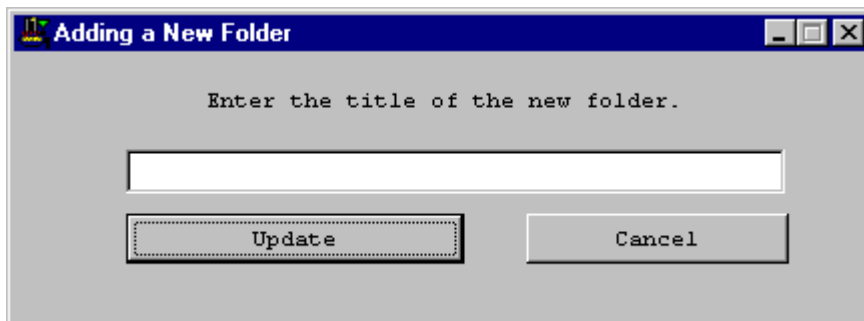
### Overview

The folders provide a way of categorising your recipes. Each folder may be given a descriptive folder title making it easier to quickly find recipes.

Each folder is a separate physical file on disk containing the recipes for the folder. Using this approach should you ever encounter a bad sector on the disk, or unwisely delete a few files, the majority of your recipes should be recoverable.

### Adding a new folder

To add a new folder use the [Edit][Folders][Add a new folder] selection from the main application window menu bar. You will be prompted for a description of the new folder as below.



Enter a meaningful description and use [Update] to create the new folder.

### Deleting an existing folder

To delete a folder **highlight the folder** description in the top window of the main application screen and use the [Edit][Folders][Delete Highlighted folder] selection from the main application window menu bar.

You will be prompted for confirmation before deleting the folder.

*You will not be permitted to delete a folder that still contains recipes !.*

### Changing the description of a folder

To change a folder description **highlight the folder** description you wish to change in the top window of the main application screen and use the [Edit][Folders][Change Folder Description] selection from the main application window menu bar.

The screen displayed will be the same as the screen in the *Adding a new folder* section covered earlier. Change the description field to the new description and [Update].

## Recipes

### ***Adding a new recipe***

To add a new recipe **first highlight the folder** entry you wish to add the new recipe into from the top window of the main application screen, and then use the **[Edit][Recipes][Add a new recipe to highlighted folder]** selection from the main application window menu bar.

The recipe add screen is a three page tabulated form covered below.

*Note that from within the tabbed notebook dialog the standard windows CONTROL-C (copy to scratchpad) and CTRL-V (paste from scratchpad) are supported if you need to copy blocks of text between windows.*

### **The recipe and Ingredients sheet**

The first sheet is used to enter the recipe descriptive details and ingredients.

All fields on this screen should be filled in accurately, as all fields on this first sheet of the tabbed dialog are used by the database search routines, which will only work effectively if the information you enter is accurate.

The recipe title is any meaningful description you wish to give the recipe. *It may not match the name of an existing recipe in the same folder or you will find your new recipe discarded when you try to save it.*

The preparation time and cook time are used in conjunction during searches, so enter these accurately. For example when searching you may request the preparation time be ignored to find those recipes you may want to cook quickly tonight when in a hurry, but don't mind doing the preparation now; so what is truly preparation work (i.e.: leave to marinate overnight) should be split out from the recipe cook time into the preparation time field. **The values in these fields should be in minutes.**

The number of servings should be accurate to facilitate searches for recipes to serve exactly N people.

*A number of servings of zero, or a cook time of zero, is not permitted.*

The cooking device to be used should also be entered accurately. In cases where multiple cooking devices are used use the one that will take the majority of the cooking time. For example if making a casserole for the microwave, but it has a step that takes 5 minutes to make a sauce on the stovetop, be sensible and select microwave as the cooking device.

The cooking devices available are controlled by the DEVICES.TXT file covered in the **Customisable Files** section.

The check-box indicating whether the recipe is vegetarian or not should be checked if the recipe you are adding is a vegetarian recipe. This value is used when searching for vegetarian-only recipes during database searches.

From the five radiobuttons indicating the type of meal, please select the one that most closely matches the recipe you are adding. The category selected here may also be used during searches to assist in filtering the search results.

The ingredients field is a free form text entry box. The ingredients entered here are searched through when database searches are done to see if the recipe contains any of the ingredients you are searching for.

Myself, I have been entering the ingredients preceded by a > to make them stand out, for example

> 1 cup of grated cheddar cheese

> 0.5 cup of milk

> 2 large potatoes

It makes them easier to read in the cases where ingredients line wrap.

The ingredients field is free form text however so feel free to enter the ingredients in any way that is easy for you to read,

An example of the Recipe Description and Ingredients tab sheet is below.

**Recipe details data entry notepad**

Recipe Description and Ingredients | Preparation Required | Recipe Method

Recipe Title :

Preparation Time :  minutes      Cooking Time :  minutes

Number of servings :       Cooking Device :

This is a totally Vegetarian recipe (used in searches so X if reqd.)

Type of recipe (used in searches so please fill in)

MainMeal     Appetiser     Desert

Sauce, Stock or Paste     Other/General

INGREDIENTS

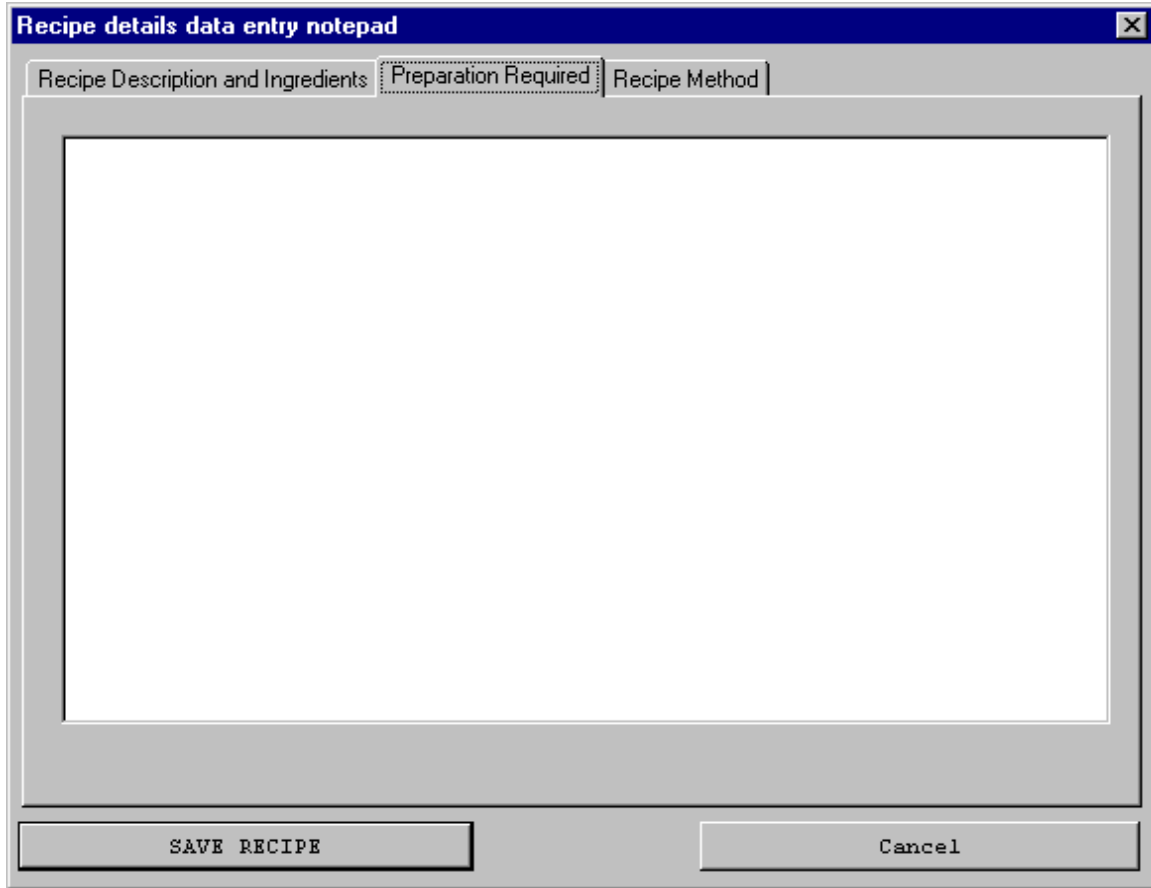
SAVE RECIPE      Cancel

### The Preparation Required sheet

Any information entered into this window will only be stored if the preparation time on the Recipe Description and Ingredients sheet is not zero. If the preparation time is zero any data entered into this field will be discarded when the recipe is saved.

On this screen you should enter all the preparation steps required for the recipe, things such as marinate for three hours etc. that are not part of the main recipe cooking steps.

The input window here is free form text.

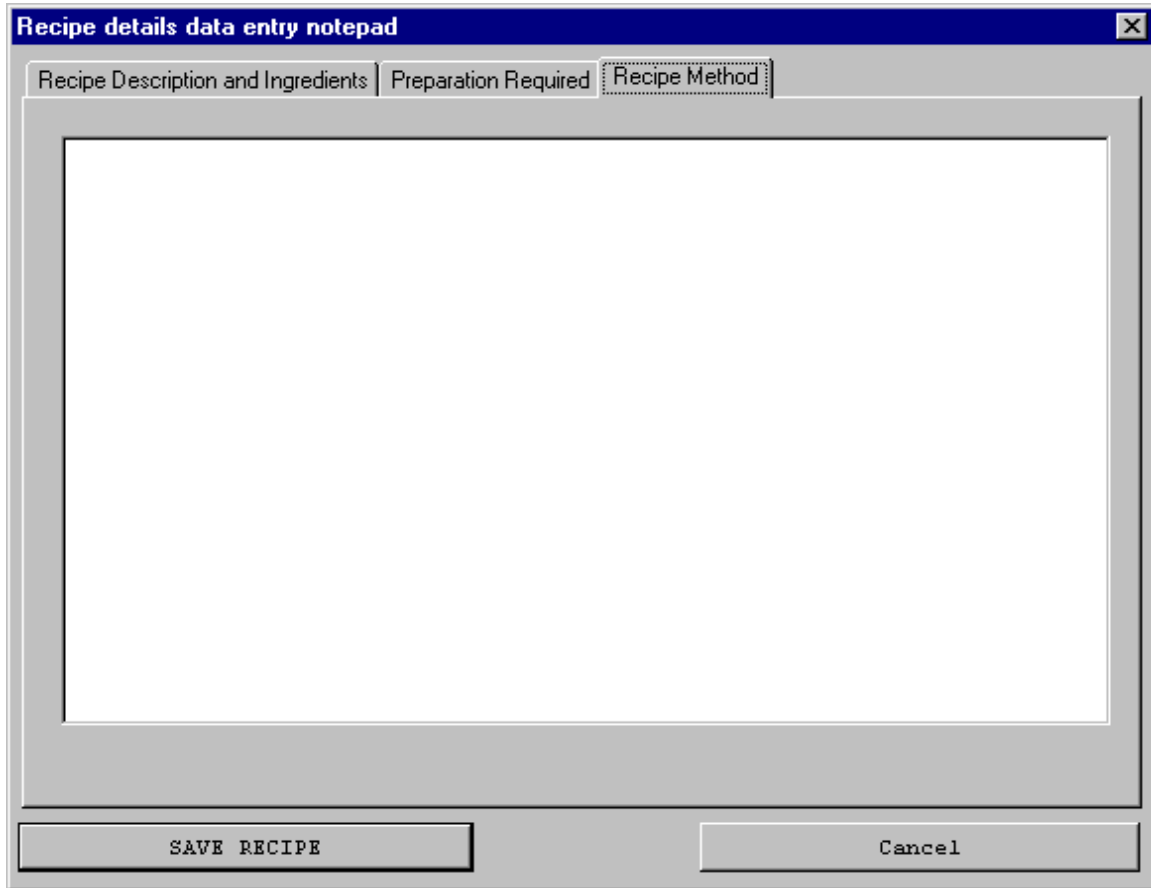


The image shows a screenshot of a software window titled "Recipe details data entry notepad". The window has a blue title bar with a close button (X) in the top right corner. Below the title bar, there are three tabs: "Recipe Description and Ingredients", "Preparation Required", and "Recipe Method". The "Preparation Required" tab is currently selected and highlighted. The main area of the window is a large, empty white rectangular box, intended for free-form text entry. At the bottom of the window, there are two buttons: "SAVE RECIPE" on the left and "Cancel" on the right.



## The Recipe Method sheet

In this sheet you should enter the main body of the recipe cooking instructions. This input window is also free form text.



The image shows a screenshot of a software window titled "Recipe details data entry notepad". The window has a blue title bar with a close button (X) in the top right corner. Below the title bar, there are three tabs: "Recipe Description and Ingredients", "Preparation Required", and "Recipe Method". The "Recipe Method" tab is currently selected and highlighted with a dotted border. The main area of the window is a large, empty white rectangular box, intended for entering the recipe's cooking instructions. At the bottom of the window, there are two buttons: "SAVE RECIPE" on the left and "Cancel" on the right.

As long as all the required details are entered selecting the [**Save Recipe**] button will store the recipe into the folder you highlighted.

### ***Deleting an existing recipe***

To delete recipe from a folder **highlight the recipe** entry you wish to delete in the bottom window of the main application screen, and then use the **[Edit][Recipes][Delete Highlighted Recipe]** selection from the main application window menu bar.

You will be prompted for confirmation before the recipe is deleted.

### ***Editing a recipe***

To edit an existing recipe **highlight the recipe** entry you wish to update in the bottom window of the main application screen, and then use the **[Edit][Recipes][Edit Highlighted Recipe]** selection from the main application window menu bar.

You will be presented with the same tabbed sheets as in the *Adding a new recipe* section which was covered earlier, with the fields filled in with the existing recipes data.

When you have finished making your changes the **[Save Recipe]** button will save the changes made.

### ***Copying a recipe to another folder***

As many recipes are similar in detail, it is possible to take a copy of a recipe to make changes to rather than having to enter all the recipes details again.

To copy an existing recipe **highlight the recipe** entry you wish to copy in the bottom window of the main application screen, and then use the **[Edit][Recipes][Copy Highlighted Recipe]** selection from the main application window menu bar.

The following advice screen is displayed



The recipe will be buffered until the next copy, cut or paste operation.

To create the copy of the recipe highlight the folder you wish to place the copy of the recipe into from the top window of the main application screen and use the **[Edit][Recipes][Paste Recipe into highlighted folder]** selection from the main application window menu bar.

**Note:** If you are pasting into the same folder the original recipe was copied from the recipe pasted will have the same description with a number appended to the end of it to make it unique.

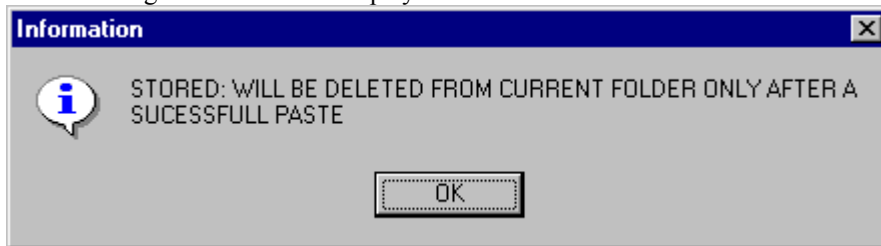
**Note:** If any other cut or copy operation is performed before the recipe is pasted then the copy will be canceled.

### ***Moving a recipe to another folder***

At some point you may decide a recipe belongs in another category of folder description.

To move an existing recipe **highlight the recipe** entry you wish to move in the bottom window of the main application screen, and then use the **[Edit][Recipes][Cut (Move) Highlighted Recipe to another folder]** selection from the main application window menu bar.

The following advice screen is displayed.



The recipe will be buffered until the next copy, cut or paste operation. **It will not be deleted from the folder you have 'cut' it from until after it has been successfully pasted into a new target folder.x**

To actually move the recipe highlight the folder you wish to move the recipe into from the top window of the main application screen and use the **[Edit][Recipes][Paste Recipe into highlighted folder]** selection from the main application window menu bar. The recipe will be written to the highlighted folder and deleted from the original folder at this time.

**Note:** If any other cut or copy operation is performed before the recipe is pasted then the move will be canceled and the recipe left in the original folder.

## Sharing Recipes with others

Obviously you don't want to spend you time re-typing in a recipe one of you friends has already entered, but would like to just import their hard work.

**The bad news is that this application will only import files created by another copy of this application.** However if they give it to you as a file you can always cut/paste it into this application.

If there is a need, and the additional formats are freely available, and enough users request it... then future releases will include other formats; but I have no need of other formats myself so have not spent any time thinking about it yet.

Having said that, if you have friends with recipe database applications you probably have already been given copies of those and are comfortable with them so won't consider this application.

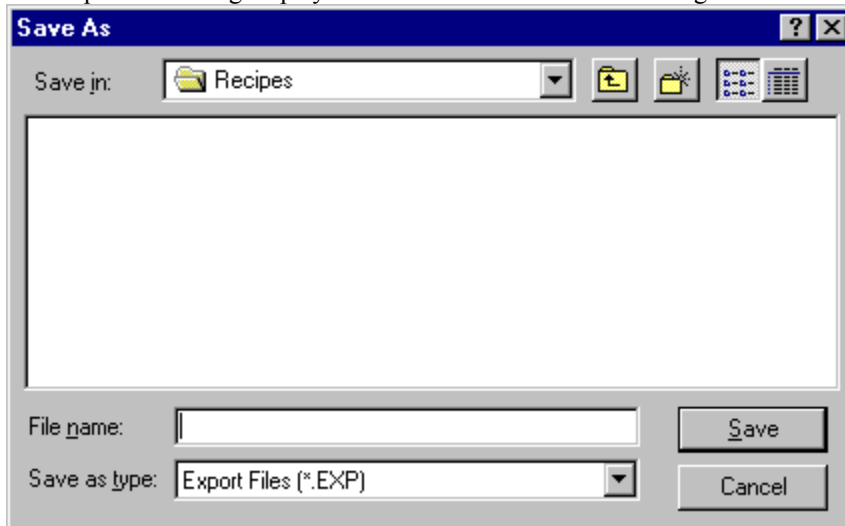
For those of you who don't have a recipe database application, and may be tempted to copy this to your friends; read on...

## Exporting Recipes

When exporting recipes a target export file container must be selected to hold the recipes being exported. This may be done by explicitly setting the name of the export file using the [Utilities][Specify an Export file] option from the menu bar of the main application screen; or if no file has been specified then the first time you try to export a recipe the [Specify an Export file] dialog will be displayed for you.

The [Specify an Export file] option is only required to be used if you wish to change file names within a single application of the program, as by default if a filename is selected it will remain the active export file for the duration of the current execution application.

The Export file dialog displayed is a standard windows file dialog as below



**Note:** If an existing export file is selected then additional recipes exported will be **appended** to the end of the existing file. It will not be overwritten.

### ***Exporting a single recipe***

This would be the normal method of exporting recipes for friends, as they normally only want one or two.

To export a single recipe **highlight the recipe** entry you wish to move in the bottom window of the main application screen, and then use the [Utilities][Export the highlighted recipe] selection from the main application window menu bar.

The recipe highlighted will be written to the currently selected export file.

**Note:** as explained on the previous page, if no export file has been specified you will be prompted for it on the first export request you make.

### ***Exporting the contents of an entire folder***

There will be occasions when you wish to export the entire contents of a folder, and to avoid tedious exporting of each recipe in that case a batch export to export an entire folder has been provided.

To export a every recipe in a folder **highlight the folder** to be exported in the top window of the main application screen, and then use the [Utilities][Export the entire contents of the highlighted folder] selection from the main application window menu bar.

All recipes in the folder will be written to the currently selected export file.

**Note:** as explained on the previous page, if no export file has been specified you will be prompted for it on the first export request you make.

### ***Creating a contents listing for the exported file***

This has been provided as a separate option rather than as part of the export process simple because many users may not choose to use it.

Its only function is to, when you are ready to give an export-format file to a friend, scan the export file and produce a 'shipping list' of the contents in the export file. It generates a standard <x>.txt file that the recipient of the export file can view to see what folders and recipes will be created if they import the export-format file. It is not in any way used as part of the import process but is a report only.

To produce a contents listing for an export-format file use the [Utilities][Create a contents shipping list for an export file] selection from the main application window menu bar.

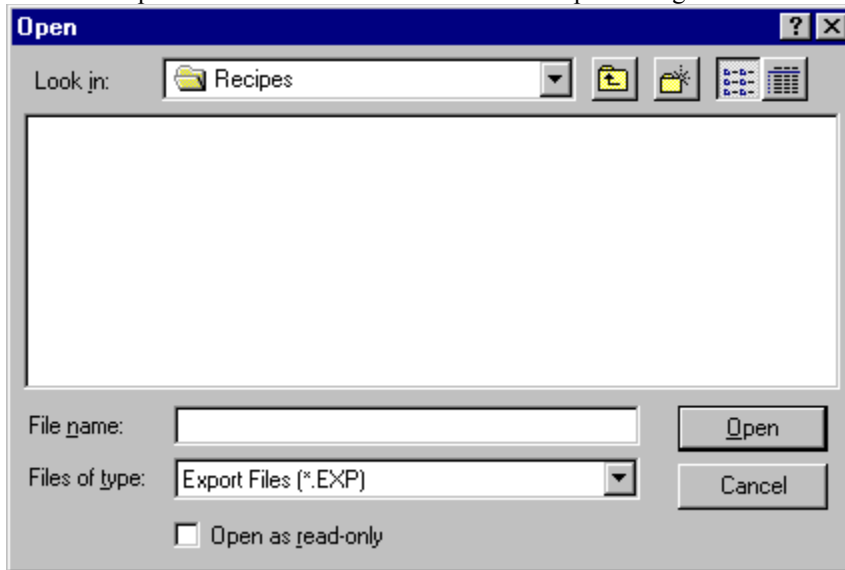
A standard windows file dialog box will be displayed allowing you to select the export file to be reported on. The <x>.txt file generated will have the same name as the export-format file but with a .txt extension.

## Importing Recipes

This application will only import recipes that have been exported by another copy of this application. It does extensive checking to ensure that the input file is of the format expected in order to avoid damaging the contents of your valuable recipe database.

To import files from an export format file provided to by one of your friends, use the **[Utilities][Import recipes from an export-format file]** selection from the main application screen menu bar.

You will be presented with a standard windows file-open dialog box from which to select the file.



After a file has been selected; a status window is displayed with a progress bar identifying how far through the import process the application has progressed.

When the import has completed you will be returned to the main application window.

**Note:** Recipes will be imported into folders of the same description that they were exported from. If required a new folder will be created to achieve this.

**Note:** If a recipe being imported has the same recipe name as an existing recipe then the recipe being imported will have a number appended to the description to make it unique during the import (i.e.: if importing recipe 'fred' and 'fred', 'fred 1', 'fred 2' already exists in the target folder at the end of the import you will have a fred and a fred 1 through 3 as the next available number will be used in the title). *No overwriting of existing data will be permitted during an import.* This is specifically to prevent you accidentally losing any of your own recipes.

## SHARING YOU RECIPES ON THE WEB

### *Exporting as HTML*

#### *Performing the database export as HTML*

The utilities menu has the option to export as HTML. This will create a full HTML dump of the database with a main index page listing all the folders and number of recipes within each, the folder links lead to the folder index pages which list all the details available on the main windows program display, and link to the individual recipes.

This is a completely standalone dump that can just be copied to a website as-is and used, or you can just run it standalone on your PC as it has no back-end smarts, they are all static pages.

The folder and recipe lists are not sorted, they are dumped as-is from the on-disk file structure used by the Recipes program.

TIP: to get them sorted run the IndexRepair program, this will as part of it's database cleanup activities re-sort all the physical files.

#### *Customising the HTML output, notes*

It dumps all the html output files specifically in the format  
line 1 – the complete html page header details<line-feed>  
line 2 – the entire page body<line feed>  
line 3 – the complete html page footer details

While that makes it almost impossible to view through a text browser, this has been specifically setup this way for my personal use, so that for my website which has a constantly changing template layout these days, I can use a bash shell script that processes the html dump files and removes line 1 and line 3 and replaces them with whatever header and footer template my site is using at the time, so it always looks like it belongs to the site.

You will probably find that format useful also if you use a Linux server.

### *Exporting as MySQL (Alpha Code)*

The utilities menu has the option to export as MySQL code. At present it just dumps the database contents and is not terribly useable.

**This is completely ALPHA code.**

I am still trying to decide on the MySQL database formats for this, consider it unstable.  
Also I have still to write the Web application back end to go with the MySQL database.  
This is a work in progress.

## Customisable Control Files

### ***The DEVICES.TXT file***

The DEVICES.TXT file allows you to determine what cooking devices are available to the application. The entries in this file are used in the pull down list when creating or editing a recipe, and also in the pull down list of the search selection screen.

It is a standard text file for easy editing.

This approach was taken over a free form text option in the cooking device field to formalise what a cooking device description may be, while still allowing user control.

If the cooking device field was free text format then using a cooking device value in the search screen would be chancy for a match at best.

Using a description file allows the application to

- ensure all recipes added use a standard device description
- standard cooking device descriptions are available in the search screen
- you, the user may also easily add new cooking devices as required

The DEVICES.TXT file resides in the application directory, and is in the following format

```
// Recipes, (c)Mark Dickinson, 1999
//
// Default cooking devices file created by application
// Please edit with your preferences...
//  Slash in column 1 is a comment record
//  Maximum device length id 10 characters
//
BARBECUE
CROCK POT
DEEP FRYER
FREEZER
FRIDGE
MICROWAVE
OVEN
WOK
```

A “/” in the first column indicates a comment line.

Any line not starting with a “/” is a cooking device description, only the first 10 bytes will be used.

***Whenever a new cooking device type is required it should be added to this file.***

**A MAXIMUM OF 15 DEVICE ENTRIES IS THE CURRENT LIMIT**



## The On-line Help Facility

On-line help for the application is available from the **[Help][Show On-line Help Documentation]** menu selections from the main application window.

This option must be used to obtain help on using the application as context specific has not yet been bound into this release of the application.

The help screens cover all functions available within the application, details on the customisable files, and as a nice touch also have a glossary on ingredient descriptions and alternatives, and conversion tables.

The glossary even has a little information on cooking safety tips.

As most of the program functions are self explanatory if you use the help you will probably spend most of your time in the glossary

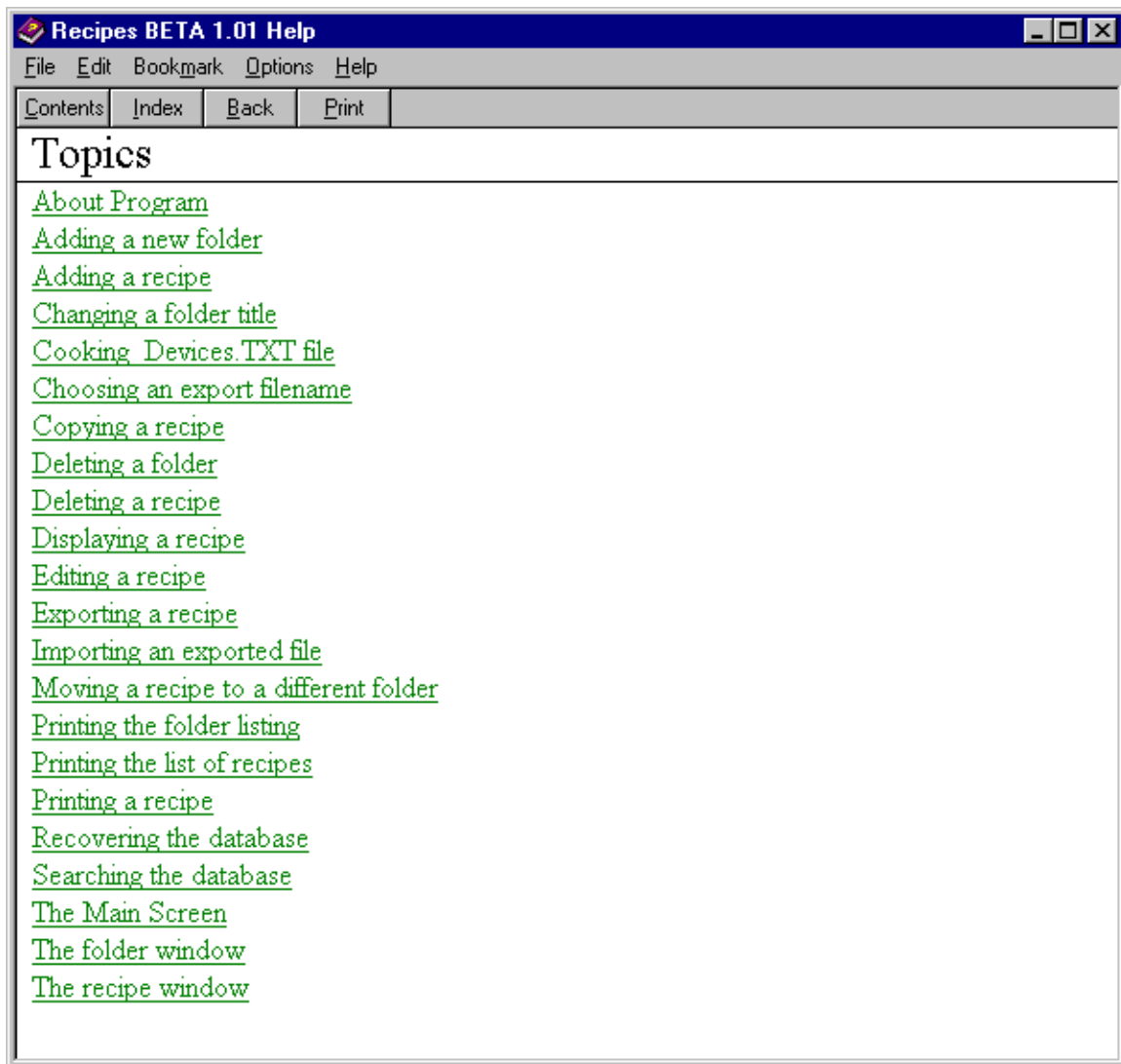
## ***The Recipes Application Help***

### **The Initial Help Screen Displayed**

The help screen first displayed when the help facility is invoked covers the application functions available. From this screen help is available for all the operations required to manage the databases and both add and share your recipes.

Using the [**C**ontents] tab will display the screen on the next page in the *Contents* help description, which provides a narrower search list, and access to the glossary help entries.

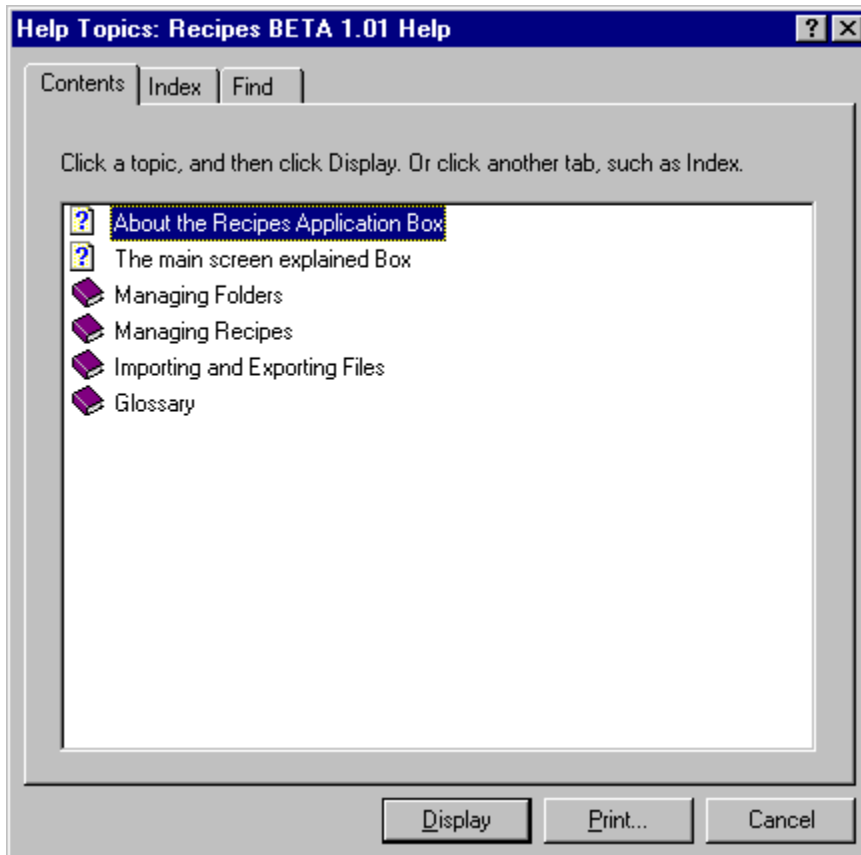
The [**I**ndex] tab option, as per standard help screens, displays a list of entries deemed worth closer attention. This is covered two pages on in the *Indexed help* section.



## Contents

The contents screen of the help facility covers the major subjects available from the help facility.

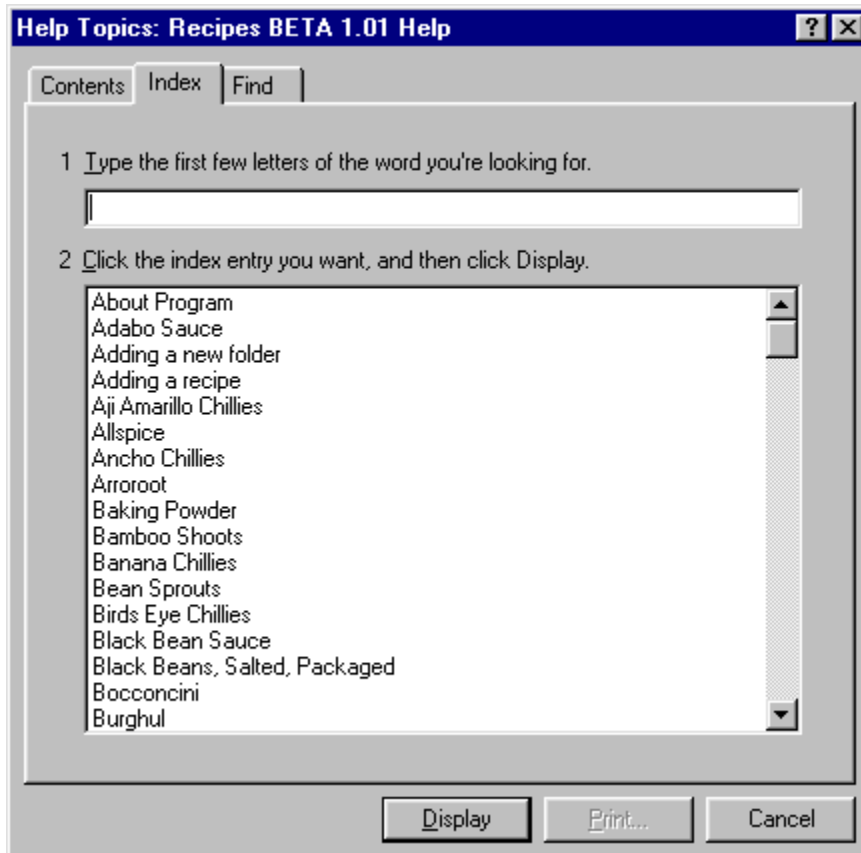
- Managing Folders - the sections on creating, altering and deleting folders
- Managing Recipes - the section on creating, altering and deleting recipes
- Importing and Exporting Files - how to do so
- Glossary - This is a large help section, covering gas/electric conversions, metric/imperial conversion, descriptions of common ingredients and possible alternatives, cooking safety tips etc.



## Indexed Help

By selecting the [Index] option of any of the help screens a list of all the keywords in the entire help database is displayed. This includes the main application help and all the glossary help information. From this list you can quickly locate help on the application functions you need, or information on ingredients or conversion tables from the glossary.

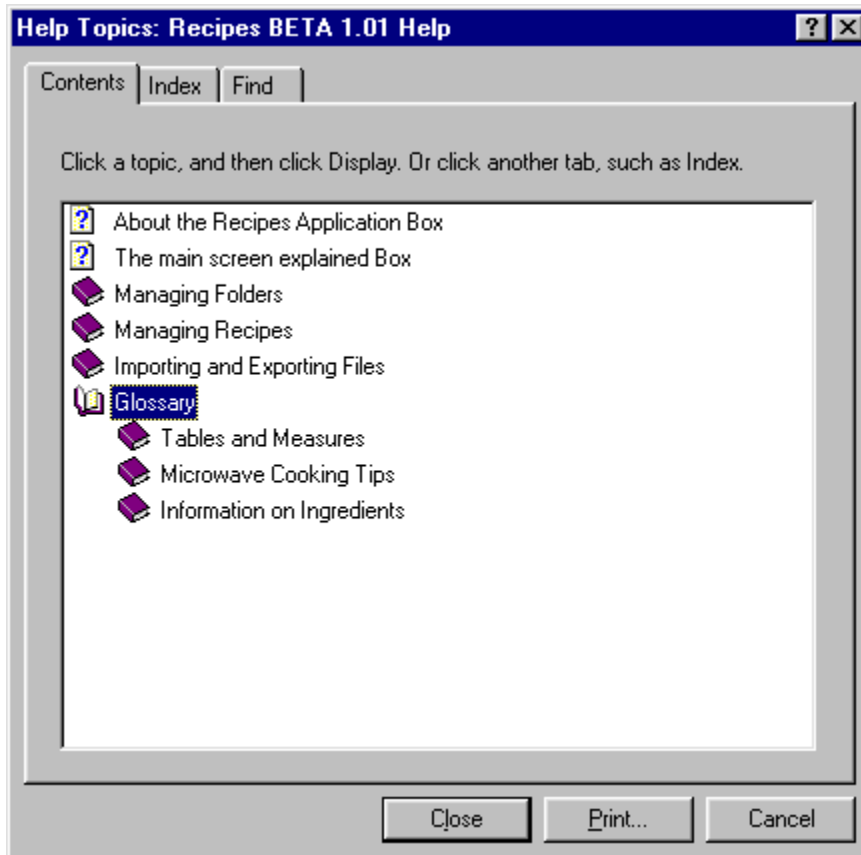
An example display of the index list is below, as you can see it covers both program functionality and ingredient descriptions.



## The Glossary Help

A glossary has been added as part of the help functionality. While this has nothing to do with the application functionality itself, it is useful information on ingredients and temperature/weight conversion tables that would have to be looked up from other sources if not present here.

The easiest way is to access the information you want from the contents screen which breaks it down into distinct categories as below. All information is available from the **[Index]** option of any screen as covered on the previous page also.



## The database Repair/Recovery tools

### *The IndexRepairTool application*

The *IndexRepairTool.EXE* program runs as a standalone application for two main reasons. Due to the work it has to do it is a large program, that I don't wish bound into the main application as it gives no benefit to the application during normal operation.

In the event of database damage that prevents the application from running, having a repair facility you cannot access without running the application seems a bit pointless.

The *IndexRepairTool* has its own help facility, this section effectively covers the operation of the *IndexRepairTool* so its help facility is not covered here.

Functions:

- sanity check indexes and folders, drop (physically delete) any that are invalid
- sort the physical files into alphabetic order (useful for dump as html option covered earlier)
- reclaim space by compressing the index files and deleting any unused folder files.

The *IndexRepairTool* runs in two modes,

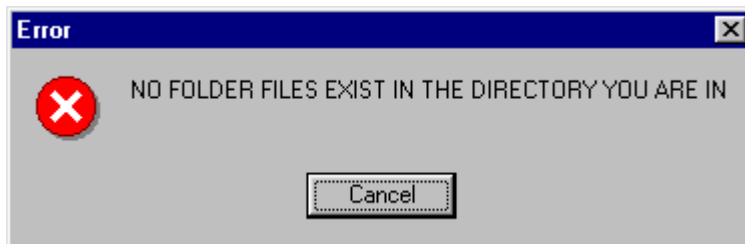
- If an existing index file is found it will use it where possible to retain folder descriptions
- If no index file exists it will create one with generated descriptions

Both options are covered below.

**The *IndexRepairTool* should be run with caution as it will physically delete any folder file that does not meet sanity checks.** Having said/written that, any folder that does not pass the sanity checks will be unusable by the application anyway.

The *IndexRepairTool* is written to recover the index file itself which is the core of the application. Recipe folders will be discarded as necessary to ensure this.

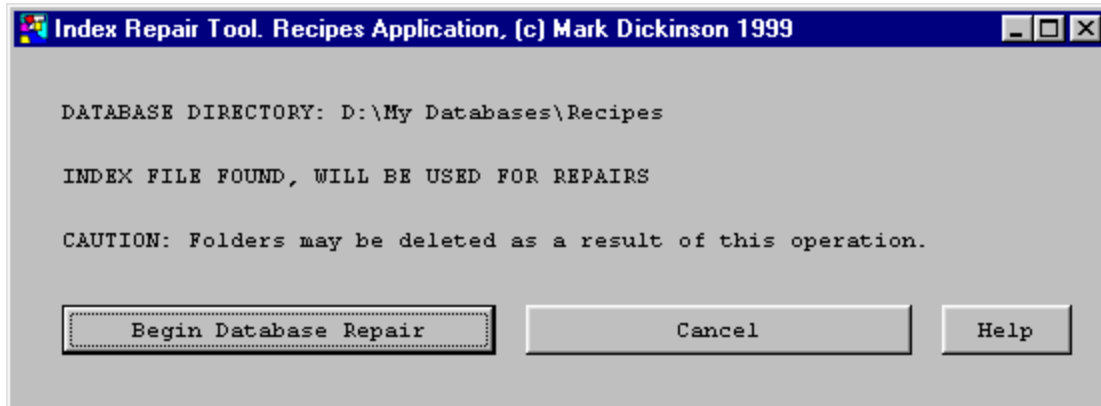
Should the *IndexRepairTool* be run in a directory without any folder files the following helpful message will be displayed. **Only run it from the database directory !.**



## With an existing Index File

If an existing index file is found the following screen will be displayed. It will show **INDEX FILE FOUND, WILL BE USED FOR REPAIRS**

In this mode the folder descriptions given to folders will be retained wherever possible.



The *IndexRepairTool* will search through every entry in the index trying to match index entries with physical folder files.

If a folder file is found for the index entry the folder file will be scanned for sanity checking to ensure that the folder is not corrupt.

- If the folder file is not found the Index entry will be deleted (folder deleted)
- If the folder file does not pass the sanity checks the Index entry and physical file will be deleted (folder deleted)
- If the folder exists and is OK the entry will be retained with the original description.

After all the above checks have been done to ensure the index file is correct

All files in the DATABASE DIRECTORY will be scanned for FOLDER\_XXXXXX filenames, and if any are found will be compared against the index file entries

*If they are not already recorded in the index file*

- The file is scanned to see if it is a valid folder file
- If it is a valid folder file it is added to the index with a description of FOLDER\_XXXXXX where the description is the name of the physical folder file found.

This recovery approach is designed to retain as many folder descriptions as possible, whilst reclaiming orphaned files and dropping missing files.

*It would normally only be required if you accidentally deleted a folder file and wish to rebuild the index without it present; or if for some reason you wish to add a new folder by copying a folder file into the directory instead of using the export/import functions.*

## Without an Index File

If an index file does not exist the following screen will be displayed. It will show **INDEX FILE NOT FOUND, WILL BE REBUILT**

In this mode a new index file will be created and the folder descriptions will be set to the name of any physical folder files that actually appear to be folder files (that pass the folder sanity checks).



If an Index file does not exist the IndexRepairTool will

- create a new index file
- scan all files in the DATABASE DIRECTORY for FOLDER\_XXXXXX filenames
- scan each file found to see if it is a valid folder file
- If it is a valid folder file it is added to the index with a description of FOLDER\_XXXXXX where the description is the name of the physical folder file found.

This recovery approach is designed to add folder files into an index file if you have for some obscure reason felt the need to delete the application index file.

*It would normally only be required if you have deleted the index file.*



## Registering

As this is FREEWARE you do not need to register unless you wish to be included in the following services.

Registered users will

- be advised of bug fix releases via e-mail
- be advised of new enhancement releases via e-mail

If you downloaded this program from my Website there will be a registration section on the download page. If you obtained the program from elsewhere then you are out of luck, as my website is being moved (dunno to where yet) so there is no point in me putting the link in here.